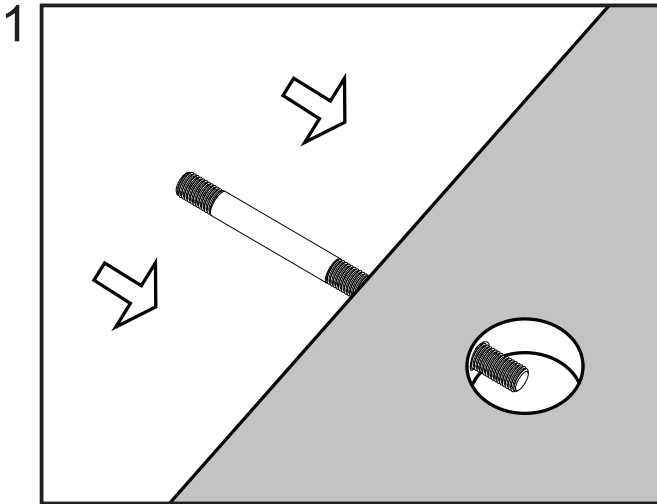
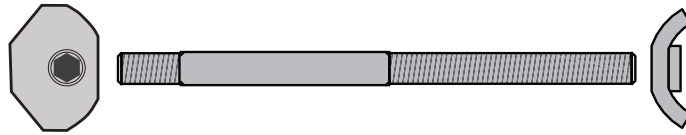
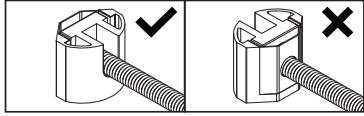
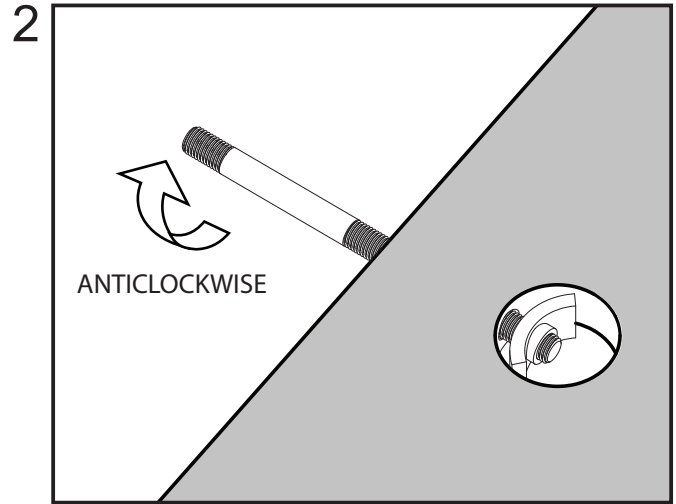


# INSTALLATION INSTRUCTIONS

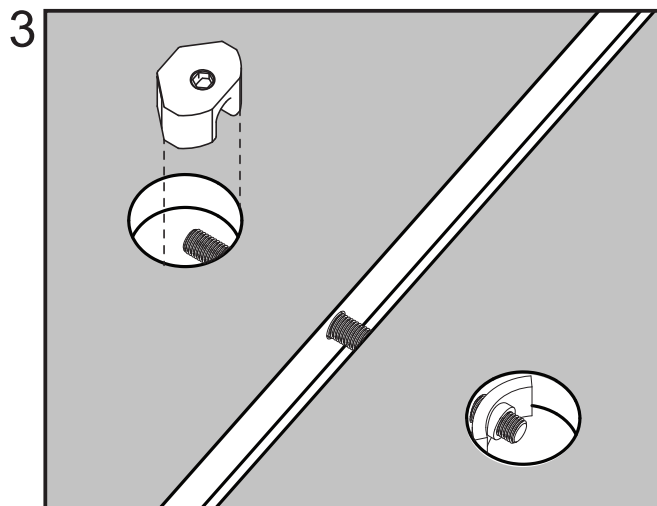
Zipbolt UT Mini 10.820 - Line Bored 6mm x 90mm



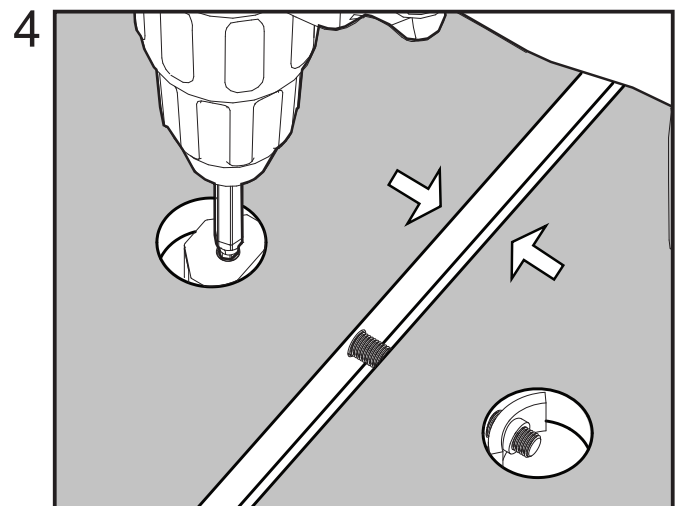
Pass screw shaft through edge of board.



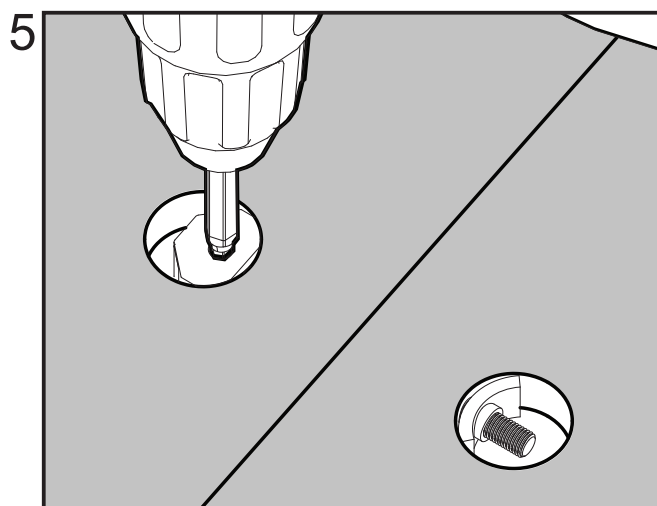
Place curved end plate into 1" (25mm) hole and engage screw shaft turning anticlockwise.



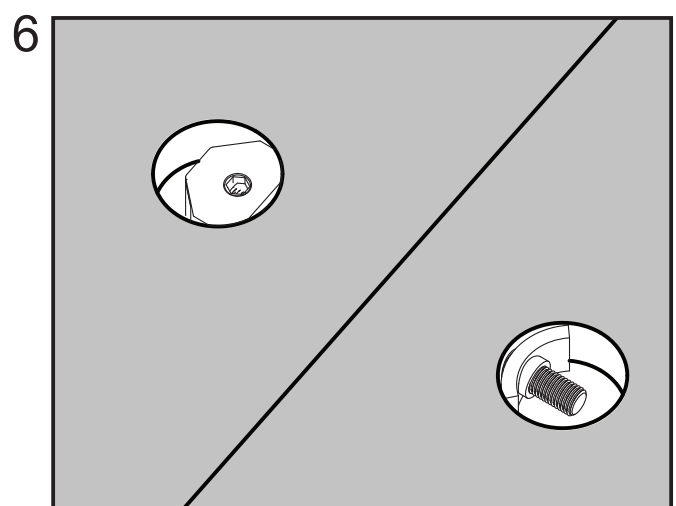
Slide second board onto screw shaft and place the gear housing into position



Use 4mm hex bit in power tool on low torque setting to tighten the connector



Complete tensioning



Job complete.